







Filled with  
CAKED  
CRUD



Bent FAN BLADE



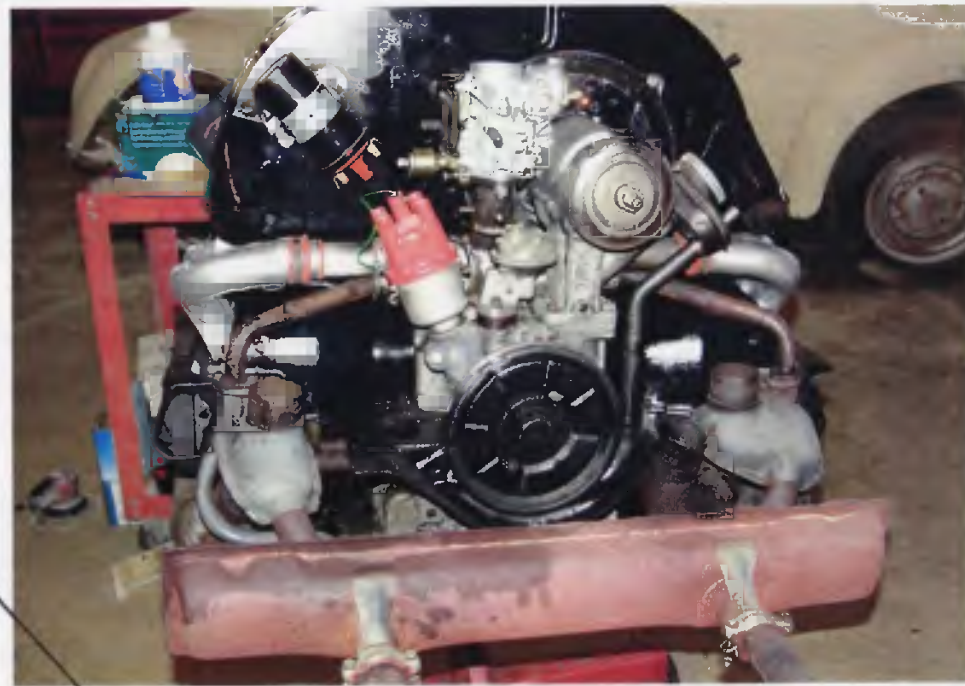
Generator  
Brushes  
NO GOOD



I put a chrome back plate on since your back one was so greasy



OLD BRUSHES



NEW BRUSHES INSTALLED







New Head

BAD MOTOR MOUNT  
OIL SOAKED



Chemical Clean Block - NO MORE GREASE!

OLD Head



telflon tape of swirter



clutch



↓ new clutch disc.



this is what she looks like now



Cleaned & painted down sheet metal?





New Oil Cooler Seals



Rusted Framehead - get to be done.



10/10/1977



part of one of the ... BIAE ...